



environmental credentials

www.lathamtimber.co.uk

www.lathams-accoya.co.uk

Dudley 01384 234444
Fareham 01329 854800
Gateshead 0191 469 4211
Ossett 01924 276111

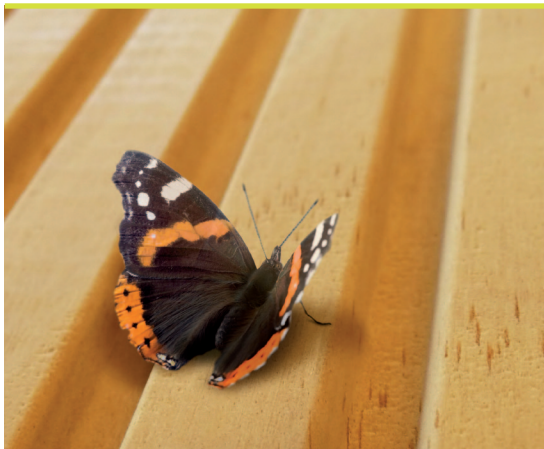
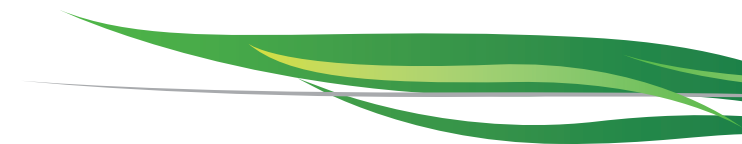
Purfleet 01708 864477
Scotland 01698 838777
Wigston 0116 288 9161
Yate 01454 315421



official supplier of



By significantly enhancing the durability and dimensional stability of fast growing, abundantly available certified wood species, Accoya® wood provides compelling environmental advantages over slow growing hardwoods which are often in limited sustainable supply, woods treated with toxic chemicals, and non-renewable carbon-intensive materials such as plastics, steel and concrete.



From cradle to cradle Accoya® provides competitive advantages from an environmental point of view



Production phase



All Accoya® wood is produced from well managed sustainable sources including FSC®, PEFC and other regionally certified woods.



Use of abundantly available, fast growing source species such as Radiata Pine.



The Accoya® wood manufacturing process is non-toxic and adds nothing to the wood that does not already naturally occur in it.

Use phase



Enhanced durability, facilitating a longer lifespan, improved carbon sequestration potential and lower lifetime material consumption versus other materials.



Outstanding dimensional stability and improved hardness, resulting in lower maintenance frequency and therefore less coating used over product lifetime.



Superior thermal insulation, yielding energy conservation advantages for applications including windows and doors.



Accoya® wood is an environmentally compatible substitute for carbon intensive materials.

End-of-life phase

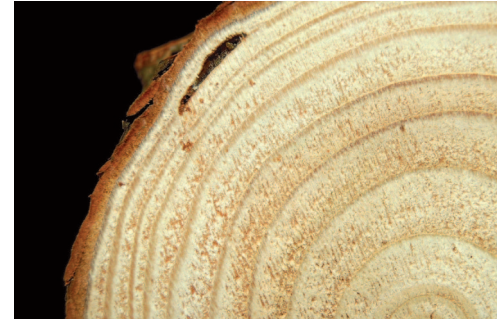


In the Cradle to Cradle™ philosophy for which it holds the Gold certification, Accoya® wood is understood to be non-toxic and 100% biodegradable.



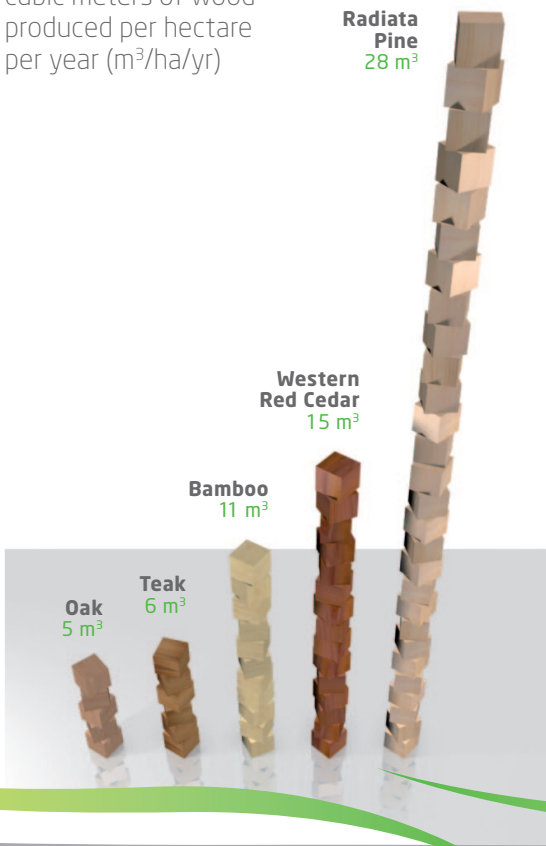
Fully reusable and recyclable. Reuse is recommended but Accoya® wood may be safely incinerated for bio-energy or composted.

to find out more visit www.accoya.com/sustainability

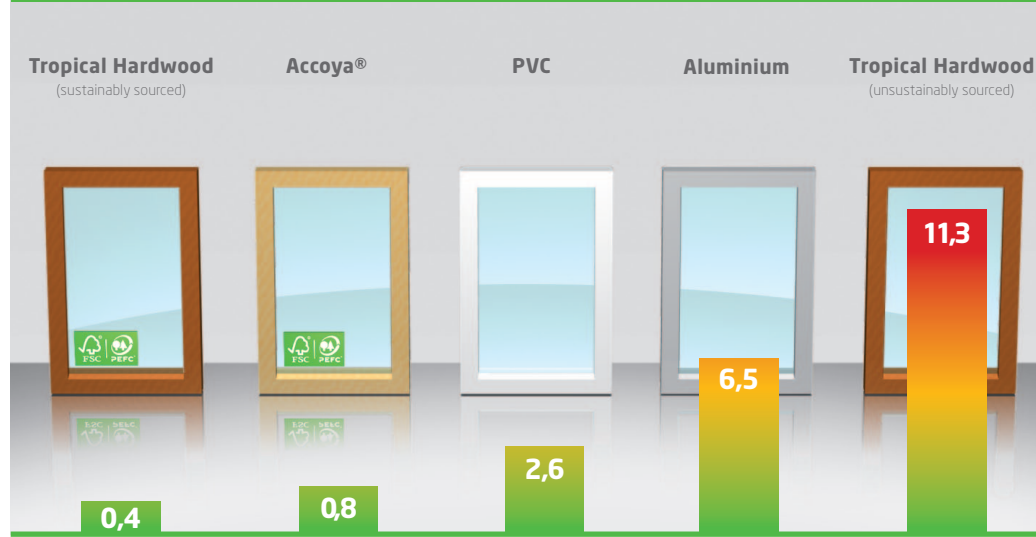


annual yield comparison

cubic meters of wood produced per hectare per year (m³/ha/yr)



carbon footprint comparison - window frames



annual emissions per window frame in kg CO₂

ecolabels



The mark of responsible forestry



www.pefc.org



- ▶ In a carbon footprint assessment, greenhouse gas emissions during the life cycle of a product/material can be measured, numbers provided in kg CO₂ equivalent
- ▶ Lifespan assumptions: Accoya® 50 years, Tropical hardwood (red meranti) 35 years, PVC 35 years, aluminium 50 years
- ▶ Includes carbon sequestration effect of wood according to PAS 2050 guidelines (www.bsigroup.com)
- ▶ Annual yield of renewable materials is not included in a carbon footprint assessment and can be perceived as an additional environmental credential for slow growing, limited available certified tropical hardwood, but especially for Accoya® based on fast growing certified sources